

Value Engineering Summary

Existing baseball fields to remain. (*Potential community grant for turf*)

Track/ Sports fields moved to the south

Lowered Athletic building 2'-0"

Lowered Track/ Sports fields 1'-0"

Reduced retaining walls

Relocate Batting cages

Grandstands reduction from 2300 seats to 1700 seats. (*Typical at all future High School projects*)

Concessions are no longer under grandstands -
Separate concessions building

Revised exterior finish

Composite metal panel to metal panel

Performing Arts: brick revised to metal panel

Athletic building at west and north elevation

Revised brick to metal panel

Athletic building

Elevated walk to ball fields - *Add alternate*

Covered walk included in base bid

Athletic building interior running track - *Add alternate*

Simplified Athletic building plaza

Remove and locate solar panels from CTE and
Performing arts roof to covered walk

Omit retaining walls and exterior walk at Dance

Omit Sector 4 links and add ornamental fence
and gates.

Division street black vinyl fence – *Ornamental fence Add alternate*

Performing Arts 52nd direct access. No longer
diagonal walk

Refined HVAC mechanical system

Revised lighting package

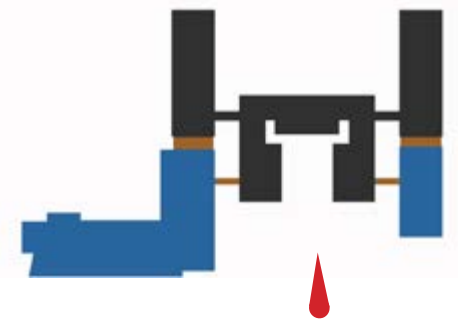
Revised shear wall locations in sector 4

Utilize the fire alarm system for PA functions

Omit Sector 4 links and add ornamental fence and gates.



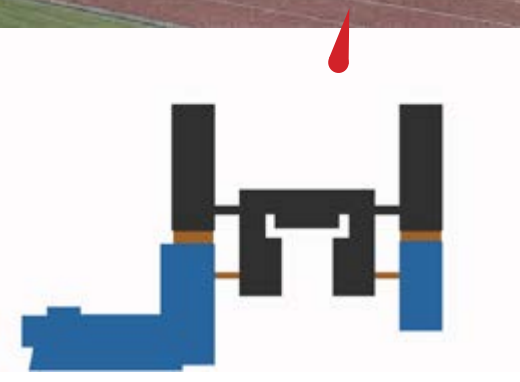
Omit Sector 4 links and add ornamental fence and gates.



- Revised brick to metal panel
- Elevated walk to ball fields - Add alternate
- Wind Turbines future



Athletic Building and Elevated Walkway

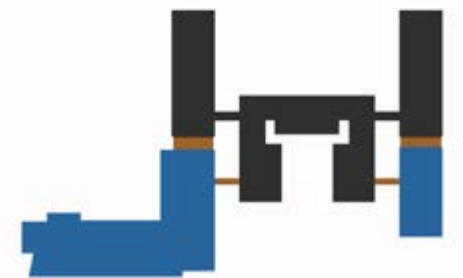
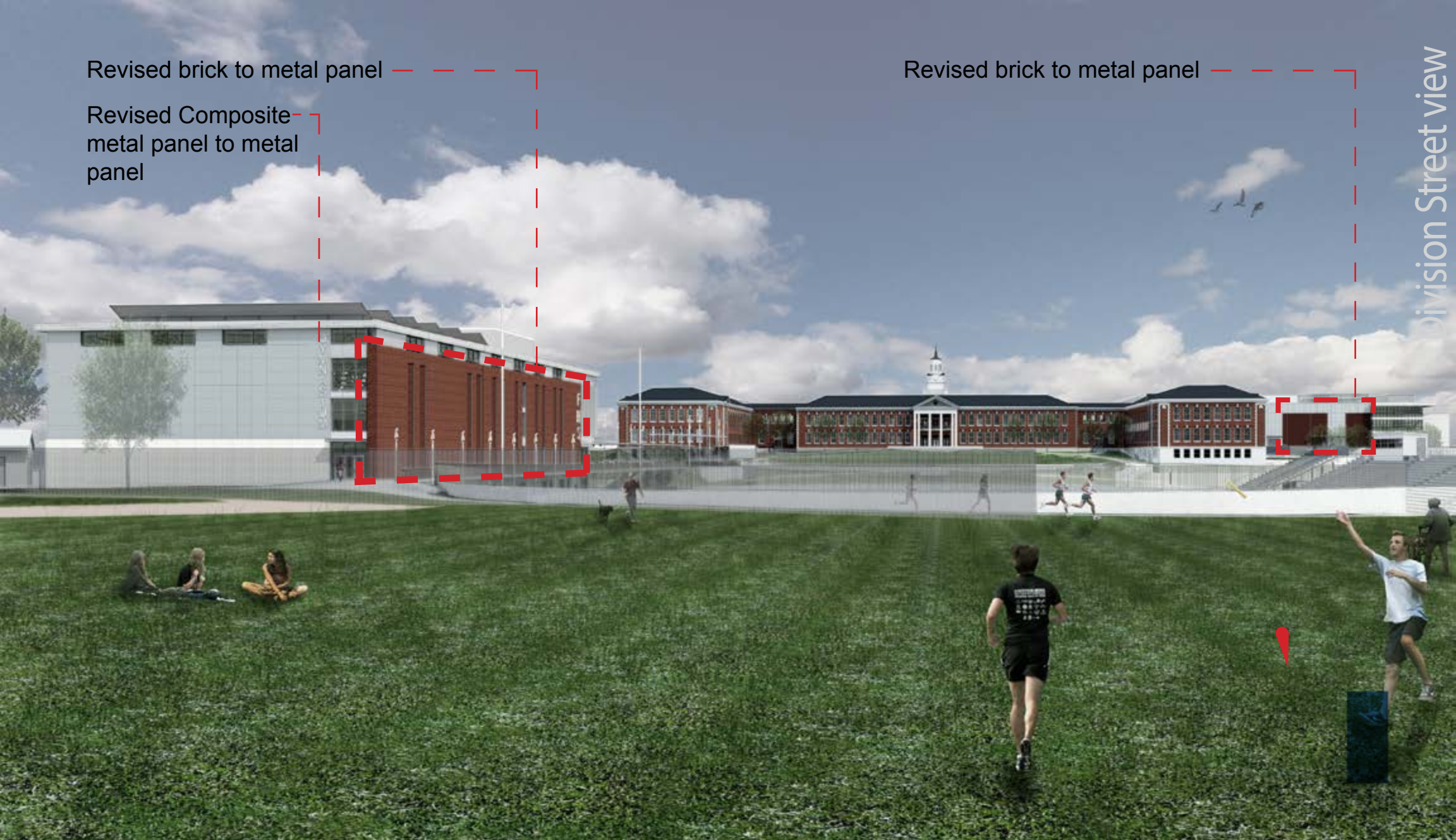


Revised brick to metal panel

Revised Composite metal panel to metal panel

Revised brick to metal panel

Division Street view





Revised brick to metal panel -
accent color

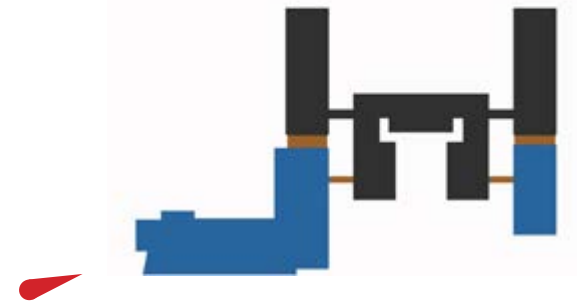
CTE/PA Taggart Court view





Revised brick to metal panel

Performing Arts SE 52nd Woodward





School Main Entry



1916



1956



1916



1916



1916



1915



1916



1916



1956



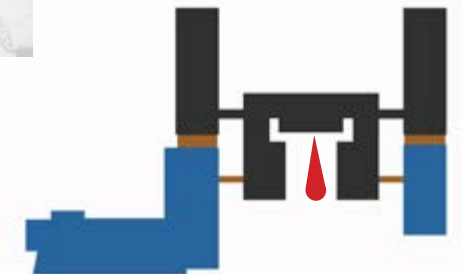
1916



1956

fhs

franklin high school modernization and addition





1916



1956



1916



1916



1916



1915



1916



1916



1956



1916



1956



franklin high school modernization and addition

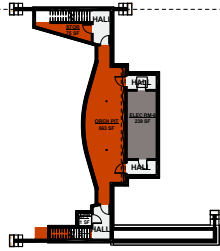
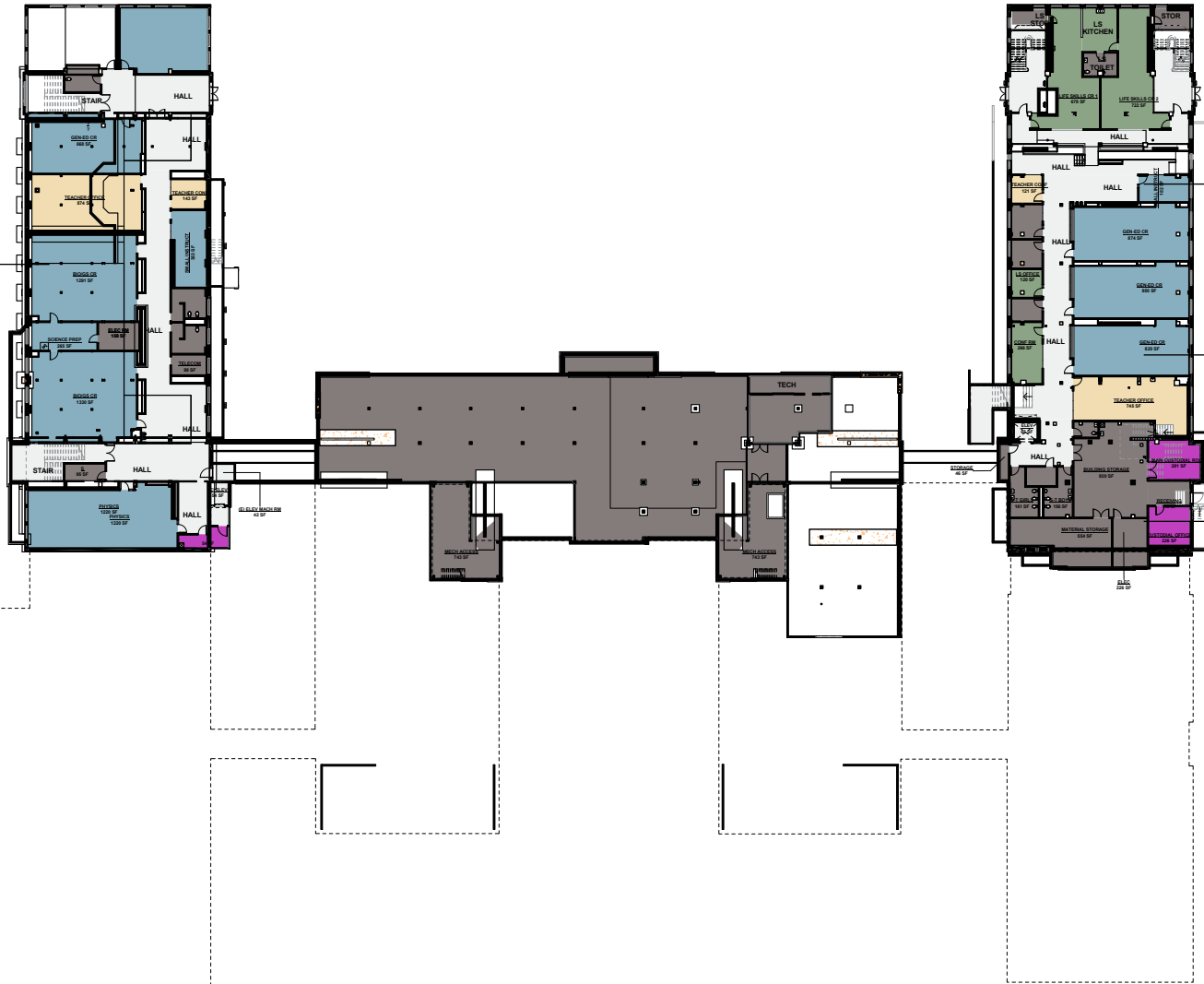


Learning Neighborhood

Life Skills

Learning Neighborhood

Storage and Receiving



- ACADEMIC
- ADMINISTRATION/COUNSELING
- BUILDING SUPPORT
- CIRCULATION
- Custodial
- LIFE SKILLS-FORMING ARTS
- SPED



Learning Neighborhood

Administration

Library

CTE

Main Entry

Student Center Commons

Food Service

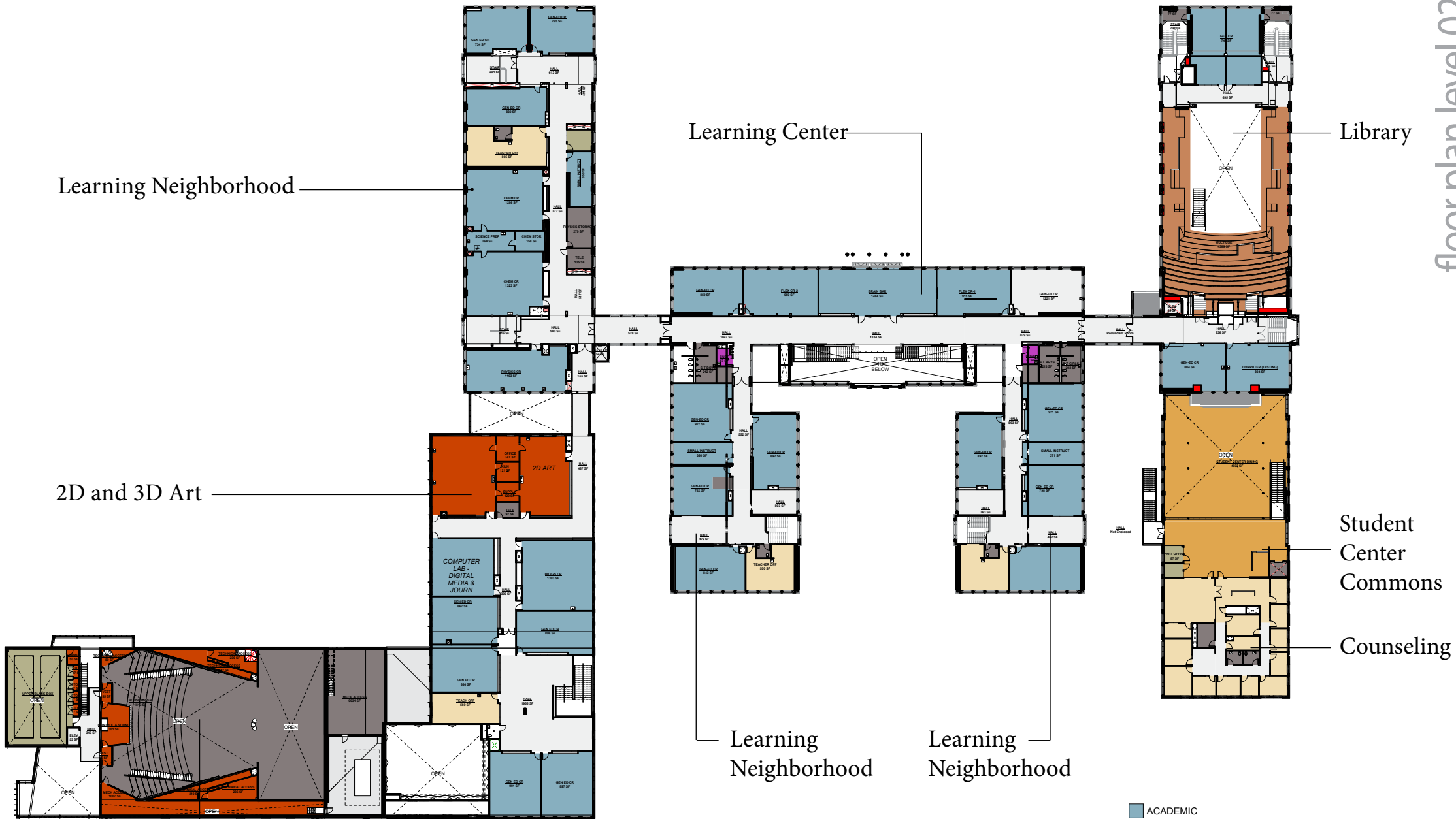
Fine and Performing Arts

Early Childhood

Wrap Around Service

- ACADEMIC
- ADMINISTRATION/COUNSELING
- BUILDING SUPPORT
- CIRCULATION
- Custodial
- EXTENDED LEARNING
- FINE & PERFORMING ARTS
- FOOD SERVICE
- LIFE SKILLS
- PE/ATHLETICS
- STEM CTE
- STUDENT CTR/COMMONS
- WRAP AROUND SERVICE PROVIDER





Learning Neighborhood

Learning Center

Library

2D and 3D Art

Student Center Commons

Counseling

Fine and Performing Arts

Learning Neighborhood

Learning Neighborhood

- ACADEMIC
- ADMINISTRATION/COUNSELING
- BUILDING SUPPORT
- CIRCULATION
- Custodial
- FINE & PERFORMING ARTS
- LIBRARY
- PE/ATHLETICS
- STEM CTE
- STUDENT CTR/COMMONS
- WRAP AROUND SERVICE PROVIDER





- ACADEMIC
- ADMINISTRATION/COUNSELING
- BUILDING SUPPORT
- CIRCULATION
- EXTENDED LEARNING
- PE/ATHLETICS
- STEM CTE

